



PINE FORGE ACADEMY

excellence is no accident...

EMPOWERED VISION

Forging Forward!

Pine Forge Academy Board of Trustees
Fundraising and Development Initiatives

2014 – 2015



PINE FORGE ACADEMY

excellence is no accident...

EMPOWERED VISION

A New Direction

The Pine Forge Academy Board of Trustees is eager to advance the strategic visioning, governance and fundraising efforts of Pine Forge Academy. The following is a synopsis of our implementation plans to ensure high quality Christ-centered education for students and families in our care.

Pine Forge Academy Board of Trustees works collaboratively with and provides direction and support to:

- The National Pine Forge Academy Alumni Association
- The Pine Forge Academy Foundation
- The Pine Forge Academy Parent Association
- Pine Forge Academy.

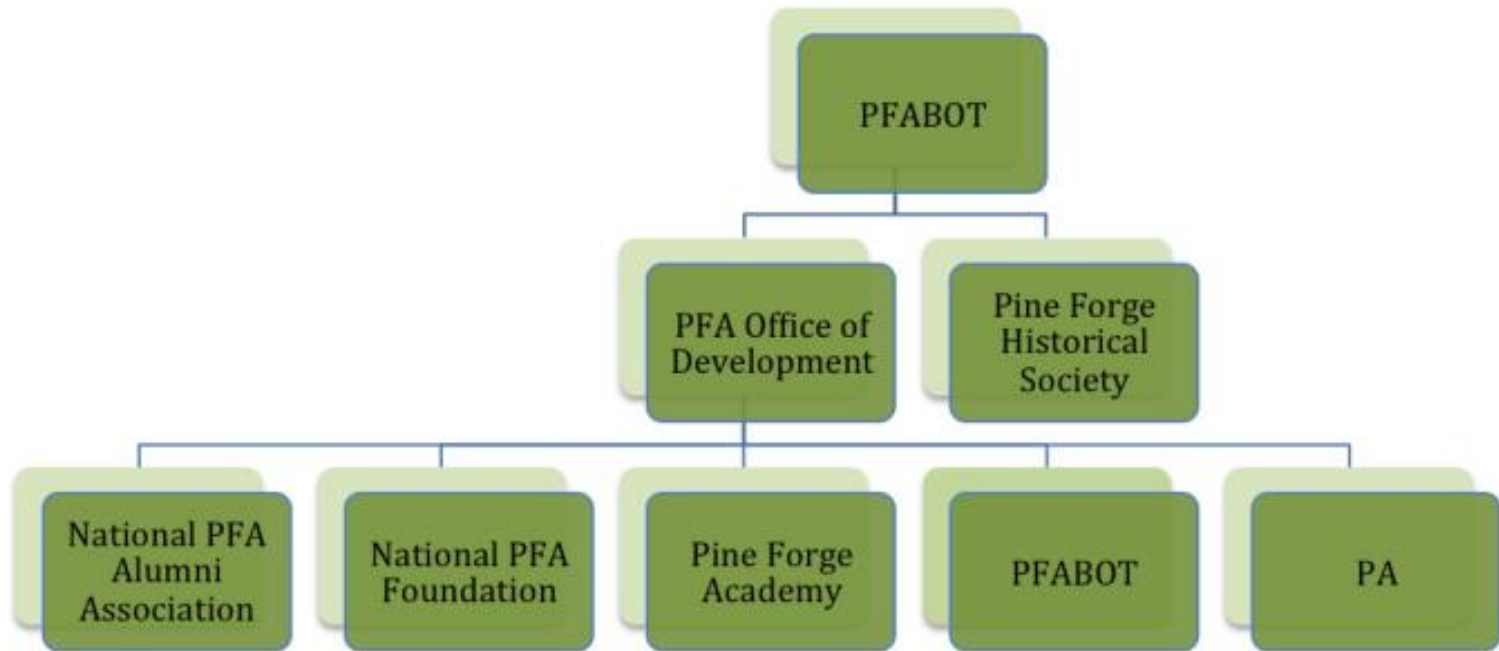


PINE FORGE ACADEMY

excellence is no accident...

EMPOWERED VISION

A New Infrastructure



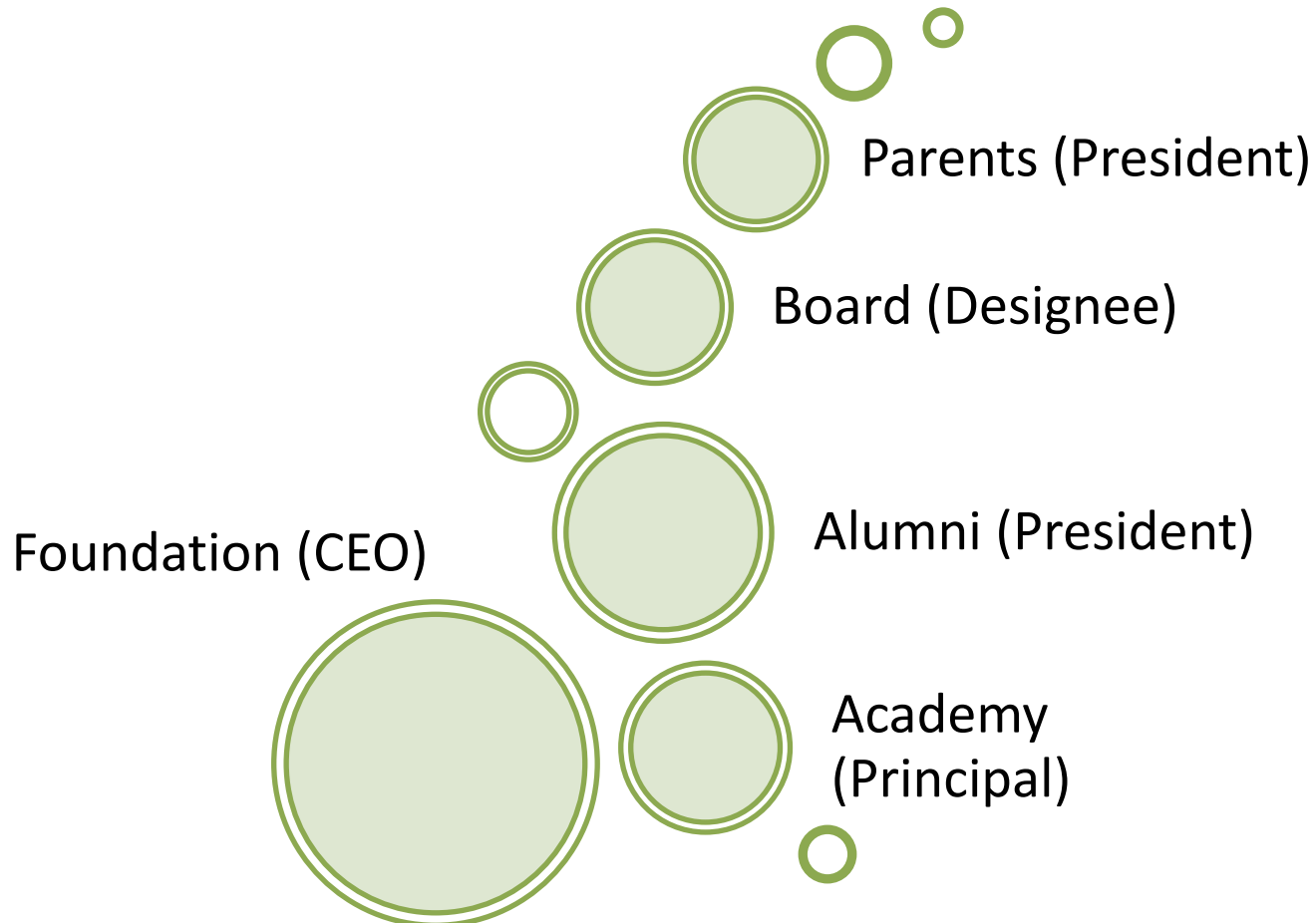


PINE FORGE ACADEMY

excellence is no accident...

EMPOWERED VISION

Teams





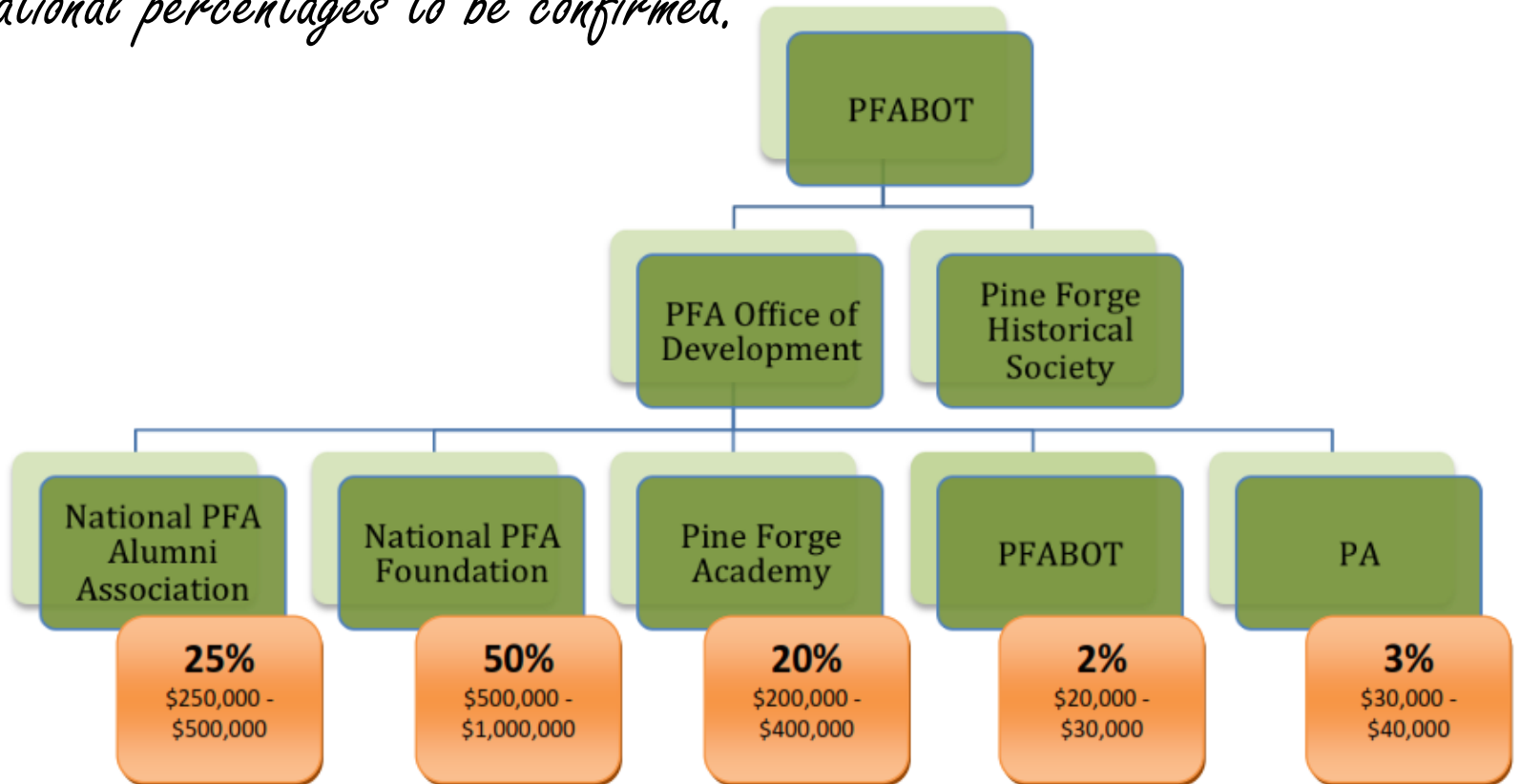
PINE FORGE ACADEMY

excellence is no accident...

EMPOWERED VISION

Targets Goals

Organizational percentages to be confirmed.



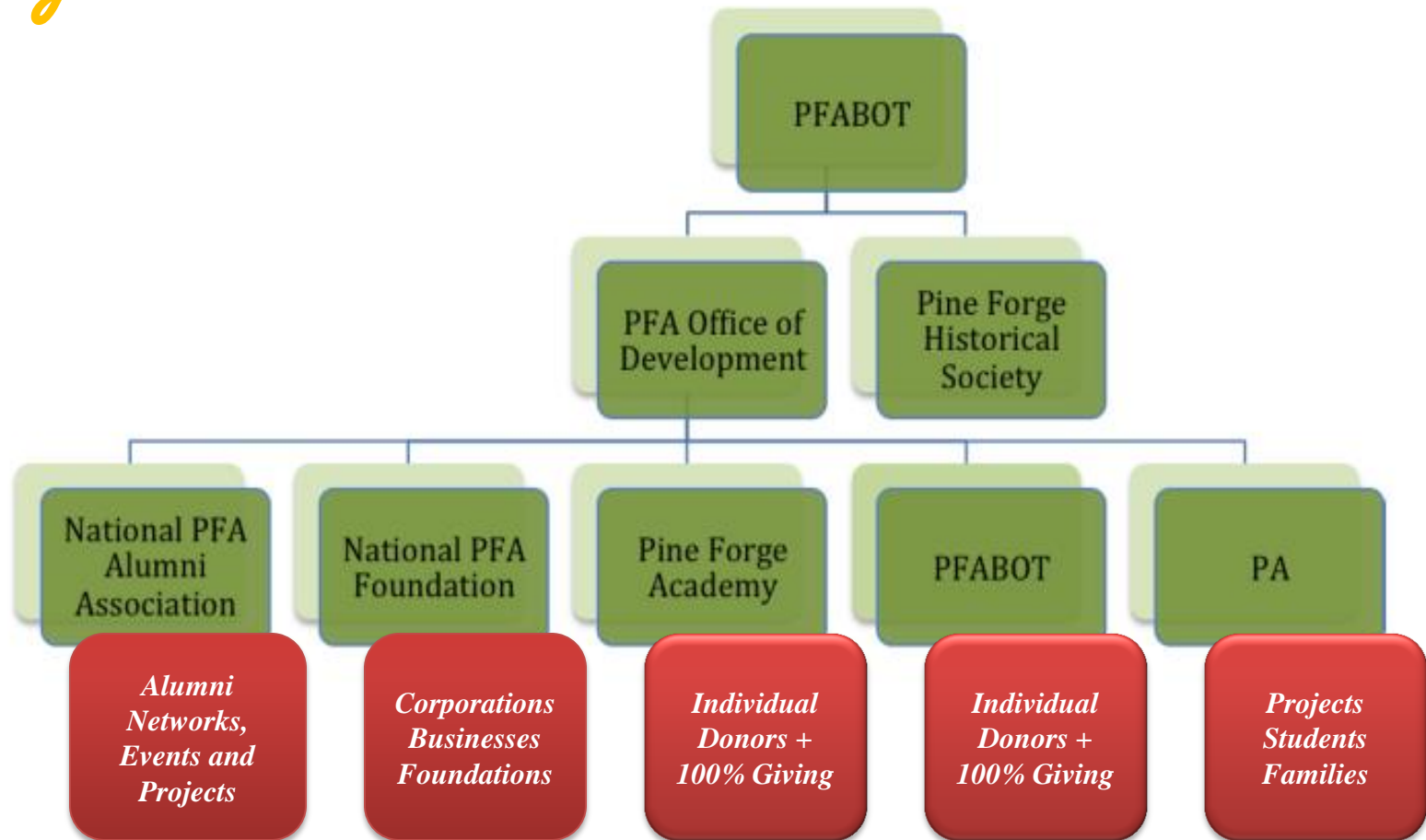


PINE FORGE ACADEMY

excellence is no accident...

EMPOWERED VISION

Target Audiences





PINE FORGE ACADEMY

excellence is no accident...

EMPOWERED VISION

A New Purpose

The Pine Forge Academy Board of Trustees has added fundraising and development as an area of primary focus. As such, PFABOT has committed to raise the following in 2014-2015.

- Amen Goal: \$1,000,000
- Hallelujah Goal: \$1,500,000
- Glory Hallelujah Goal: \$2,000,000



Primary Priorities

1. Complete major renovations of dorm bathrooms.
2. Complete major renovations of dorm buildings, including current café location.
3. Erect a new facility (perhaps repurpose the Paul R. Jones center?).
 1. STEM?
 2. STEAM?
 3. Student Center?



PINE FORGE ACADEMY

excellence is no accident...

EMPOWERED VISION

An Aggressive Timeline





Critical Tasks

- ✓ **Sept. 2014 PFABOT Board Retreat**
- ✓ **Sept. 2014 PSI MAP Grant**
- Oct. 2014 Systems**
 - Donor Connect
 - ✓ Donate Online
 - ✓ Office of Development Print Templates
 - ✓ Office of Development Banking Systems
 - Office of Development Personnel
- Nov. 2014**
 - Direct Mailing
 - Student Telethon
 - Alumni Database Transfer
 - Events TBD?
- Dec 2014**
 - Holiday Mailing
 - Holiday Email
 - AEC Live Stream/Telethon
 - Events TBD?
- Jan 2014**
 - 100% Board Giving
 - 100% Faculty and Staff Giving
- More to come....**